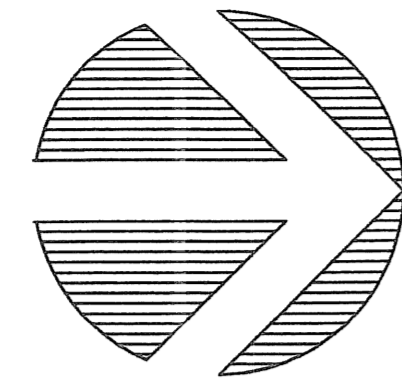


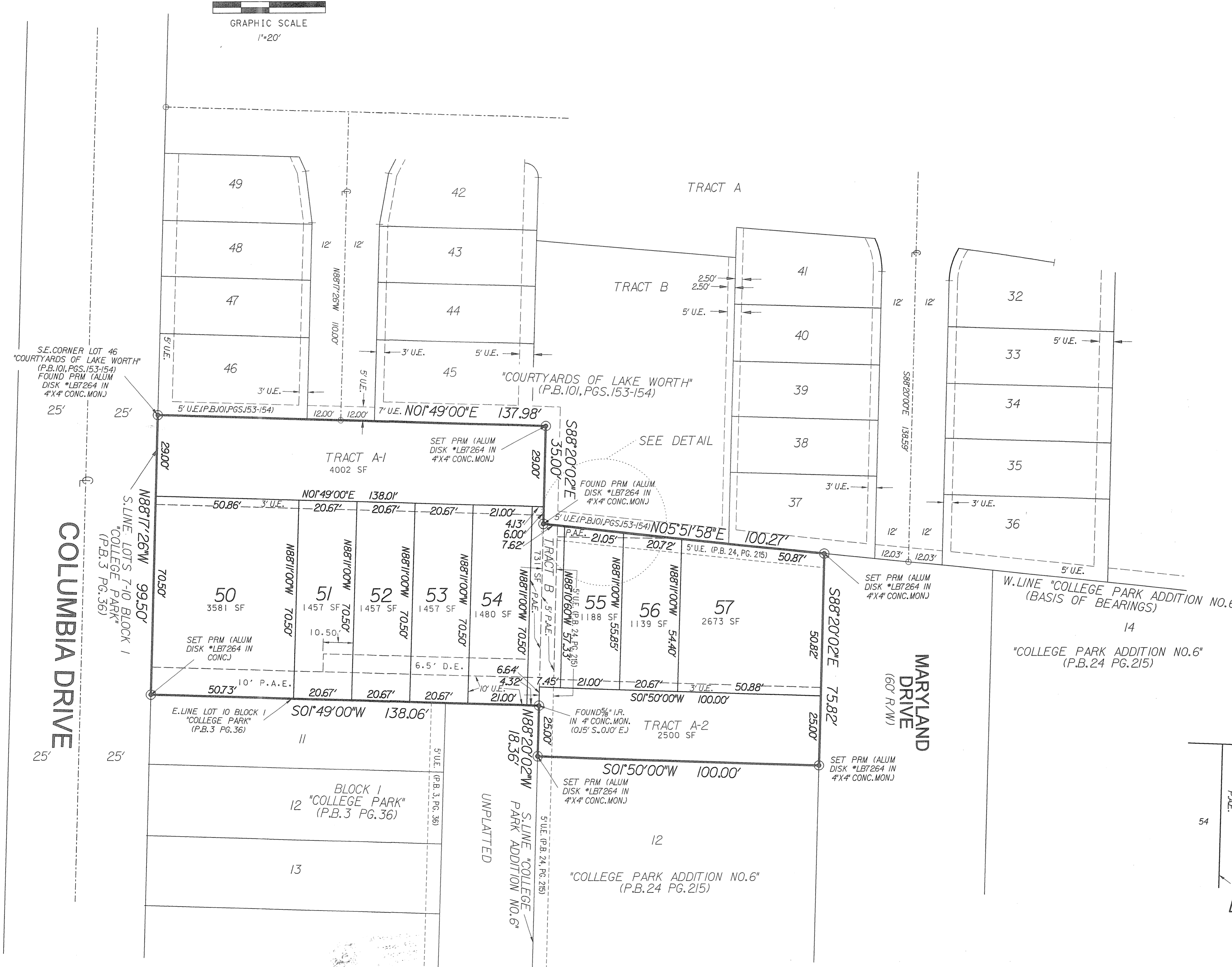
PERIMETER
SURVEYING & MAPPING
 Prepared by: Jeff S. Hodapp, P.S.M.
 Certificate of Authorization No. LB7264
 951 Broken Sound Parkway, Suite 320
 Boca Raton, Florida 33487
 Tel: (561) 241-9988
 Fax: (561) 241-5182



0 20' 40'
 GRAPHIC SCALE
 1"=20'

COURTYARDS OF LAKE WORTH PLAT 2

A REPLAT OF LOTS 7, 8, 9, AND 10, BLOCK 1, "COLLEGE PARK"
 (P.B. 3, PG. 36, P.B.C.R.), AND A REPLAT OF LOT 13, "COLLEGE PARK
 ADDITION NO. 6" (P.B. 24, PG. 215), TOGETHER WITH A PORTION
 OF THE NORTHWEST ONE-QUARTER OF SECTION 15, TOWNSHIP
 44 SOUTH, RANGE 43, EAST, CITY OF LAKE WORTH,
 PALM BEACH COUNTY, FLORIDA.
 MARCH 2005



- LEGEND:**
- ⊙ SET P.R.M. (UNLESS OTHERWISE NOTED)-ALUMINUM DISK STAMPED "LB7264 IN 4"X4" CONC. MON.
 - PERMANENT CONTROL POINT
 - ⊕ CENTERLINE
- ABBREVIATIONS:**
- AC. ACRES
 - CH. CHORD
 - CHB. CHORD BEARING
 - CONC. CONCRETE
 - COR. CORNER
 - D. DELTA (CENTRAL ANGLE)
 - D.E. DRAINAGE EASEMENT
 - L. ARCLength
 - L.B. LICENSED BUSINESS
 - L.S. LICENSED SURVEYOR
 - MON. MONUMENT
 - O.R.B. OFFICIAL RECORDS BOOK
 - P.A.E. PEDESTRIAN ACCESS EASEMENT
 - P.B. PLAT BOOK
 - P.B.C.R. PALM BEACH COUNTY RECORDS
 - PG. PAGE
 - P.C.P. PERMANENT CONTROL POINT
 - P.R.M. PERMANENT REFERENCE MONUMENT
 - P.S.M. PROFESSIONAL SURVEYOR & MAPPER
 - R. RADIUS
 - R/W. RIGHT-OF-WAY
 - S.F. SQUARE FEET
 - U.E. UTILITY EASEMENT

